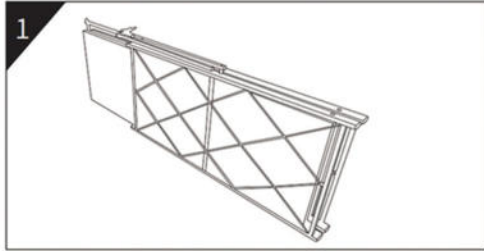
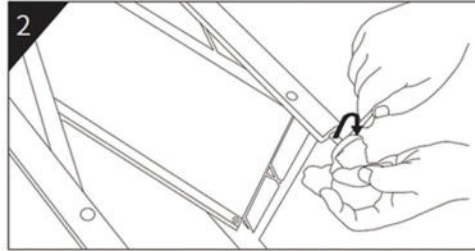


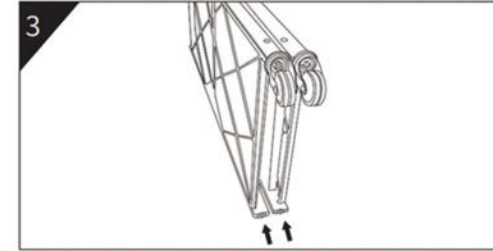
# FOLDING SHELVES WITH THREE, FOUR AND FIVE LAYERS INSTALLATION INSTRUCTIONS



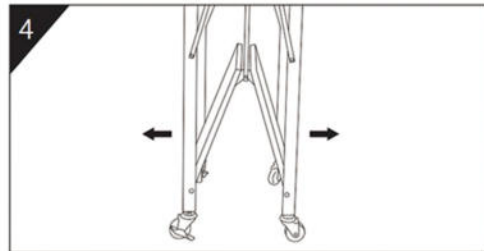
1 UNPACK AND TAKE OUT THE PRODUCT



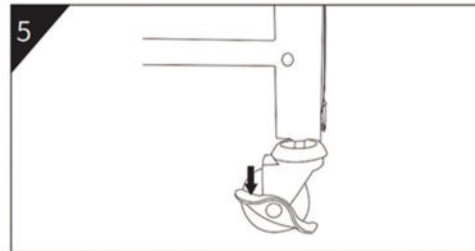
2 USE A WRENCH TO INSTALL THE WHEEL



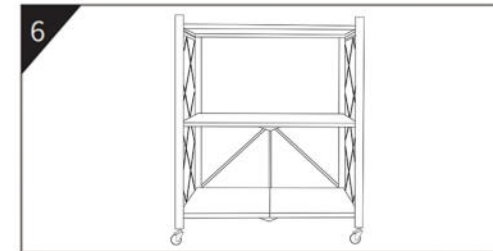
3 MAKE SURE THE FOUR WHEELS ARE IN PLACE



4 THE SHELVES ARE UNFOLDED SMOOTHLY ON BOTH SIDES OF THE HAND-HELD SHELVES



5 RELEASE THE WHEEL BRAKE



6 FINISHED



FASTEN THE LOCKING BUCKLE TO FIX THE SHELF

