

DC1600(B/E/R)

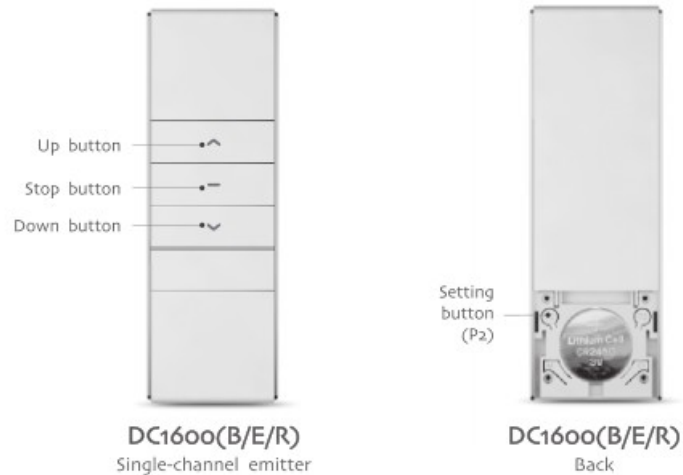
Emitter Specification

Version NO. : A/04

T

Technical
support

Type specification




DC1600(B/E/R)
Single-channel emitter

DC1600(B/E/R)
Back

T

Technical
support

Technical support

Technical specification	Function instruction
<ul style="list-style-type: none"> Input voltage: 3V (CR2450) Transmitting frequency: 433.92MHz Transmitting power: 10 Milliwatt Operating temperature: -10℃ ~ 50℃ Transmitting distance: <ul style="list-style-type: none"> outside: 200 meters, inside (between two walls): 35 meters 	<p>DC1600(B/E/R) are single-channel emitters.</p> <p>  Notice: Emitter couldn't be exposed to moisture and striked, so as not to affect life. When you use emitter, if found emission distance obviously short or less sensitive, please change another same new battery. Please have batteries for recycling. Caution: Risk of explosion if battery is replaced by an incorrect type. Dispose of used batteries according to the instructions. </p>

The function of DC1600 is same as DC90
=> see manual next page



Technical Support

- Input voltage: 12V/27A (DC90 DC92(A) DC93 DC94)
- Input voltage: 3V/CR2430 (DC93A DC94A)
- Emission Power: 10 milliwatt
- Work temperature: -10°C ~ 50°C
- Emission distance: open 200m, two walls 30m

DC90 series: DC90 DC92 (A) DC93 DC93A DC94 DC94A

- Transmitter: You can choose single channel (DC90), five channels (DC92(A)). Each indicator light means one control channel. Press 'channel choose' button P1- (indicator move left side) or P1+ (indicator move right side) to change the channel. On the analogy of this, loose finger when the indicator light move to suitable channel that you select effective channel. All indicator lights flash that means all channels is effective (group control state).
- Transmitter: You can choose nine channels (DC93), fifteen channels (DC94). One number of LCD screen means one control channel. Press 'channel choose' button P1- (number descending) or P1+ (number increasing) to change the channel. On the analogy of this, loose finger when the indicator light move to suitable channel that you select effective channel. If LCD screen number show 0 that means all channels is effective (group control state).
- Notice: transmitter Do not exposed to moisture and strike, so as not to affect life. When you use transmitter, if found emission distance obviously short or less sensitive, please change another same new battery. Please have batteries for recycling.



All controls support 433MHz & 868MHz & 315MHz
All controls support 12V/23A & 3V/CR2430
Specific parameters to the nameplate shall prevail

Control System

DC90 Series Control System Specification



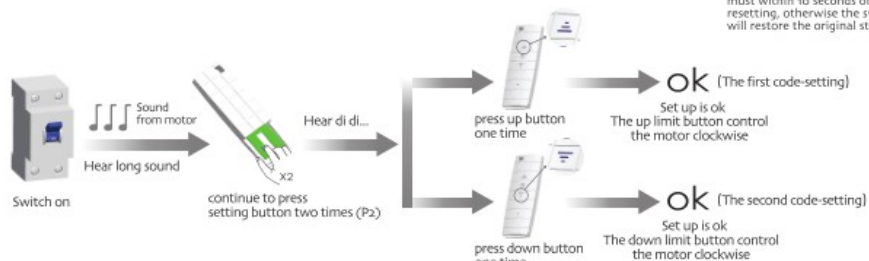
Matchable R Tubular Motor Set up



Delete all the datas of the motor and the new emitter has been programmed.



The interval of each button must within 10 seconds of resetting, otherwise the system will restore the original state.



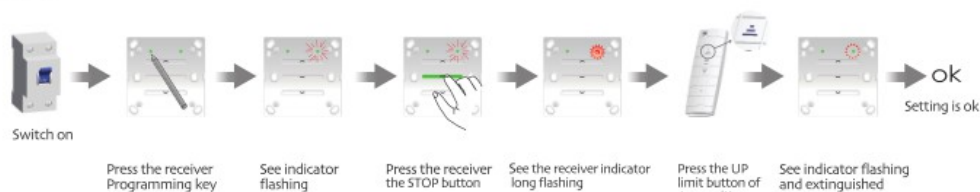
Matchable DC227/DC228 Set up



The interval of different button must within 10 seconds for all setting, otherwise the system will restore the original state



One receiver store 20 emitters channels at most, and one channel of emitter can control 20 receivers at most.



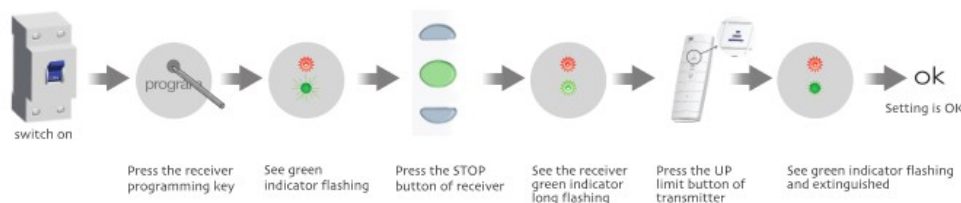
Matchable DC136 Set up



The interval of different button must within 10 seconds for all setting, otherwise the system will restore the original state.



One receiver store 20 emitters channels at most, and one channel of emitter can control 20 receivers at most.



Version No: A/04



Type Specification

<p>up button</p> <p>stop button</p> <p>down button</p> <p>DC90</p>	<p>up button</p> <p>P1- button</p> <p>down button</p> <p>stop button</p> <p>P1+ button</p> <p>DC92(A)</p>	<p>up button</p> <p>P1- button</p> <p>down button</p> <p>stop button</p> <p>P1+ button</p> <p>DC93/DC94</p>
<p>setting button (P2)</p> <p>The backside of DC90/DC92(A)/DC93/DC94</p>	<p>up button</p> <p>P1- button</p> <p>down button</p> <p>stop button</p> <p>P1+ button</p> <p>DC93A/DC94A</p>	<p>setting button (P2)</p> <p>The backside of DC93A/DC94A</p>